

# EXCEL

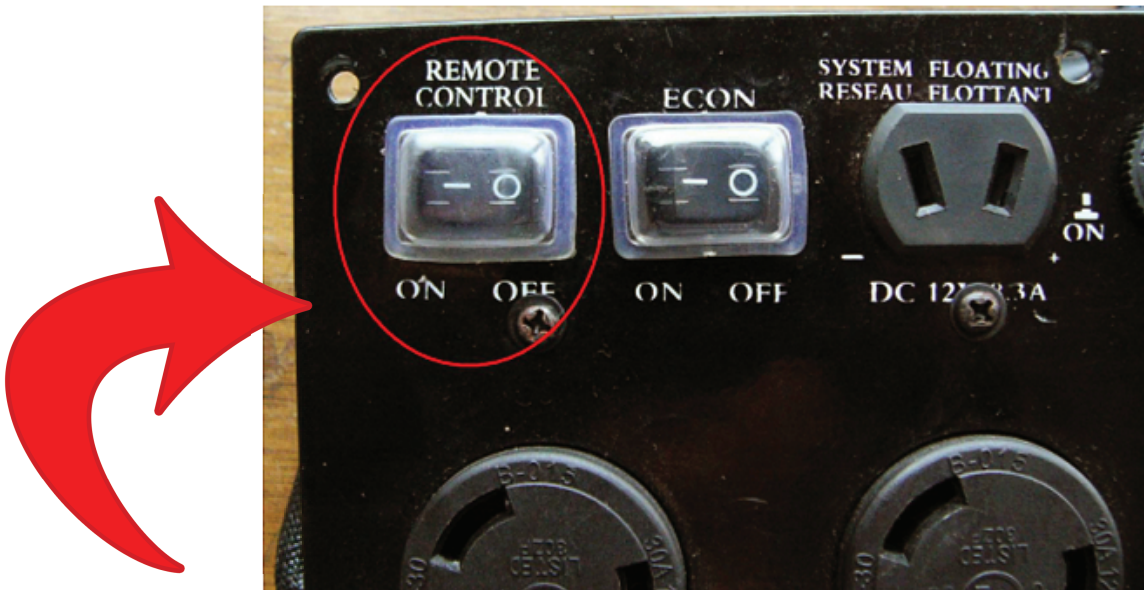
## PROFESSIONAL TOOLS

Phone: 951- 801-4546

26075 Jefferson Ave Murrieta, CA 92562

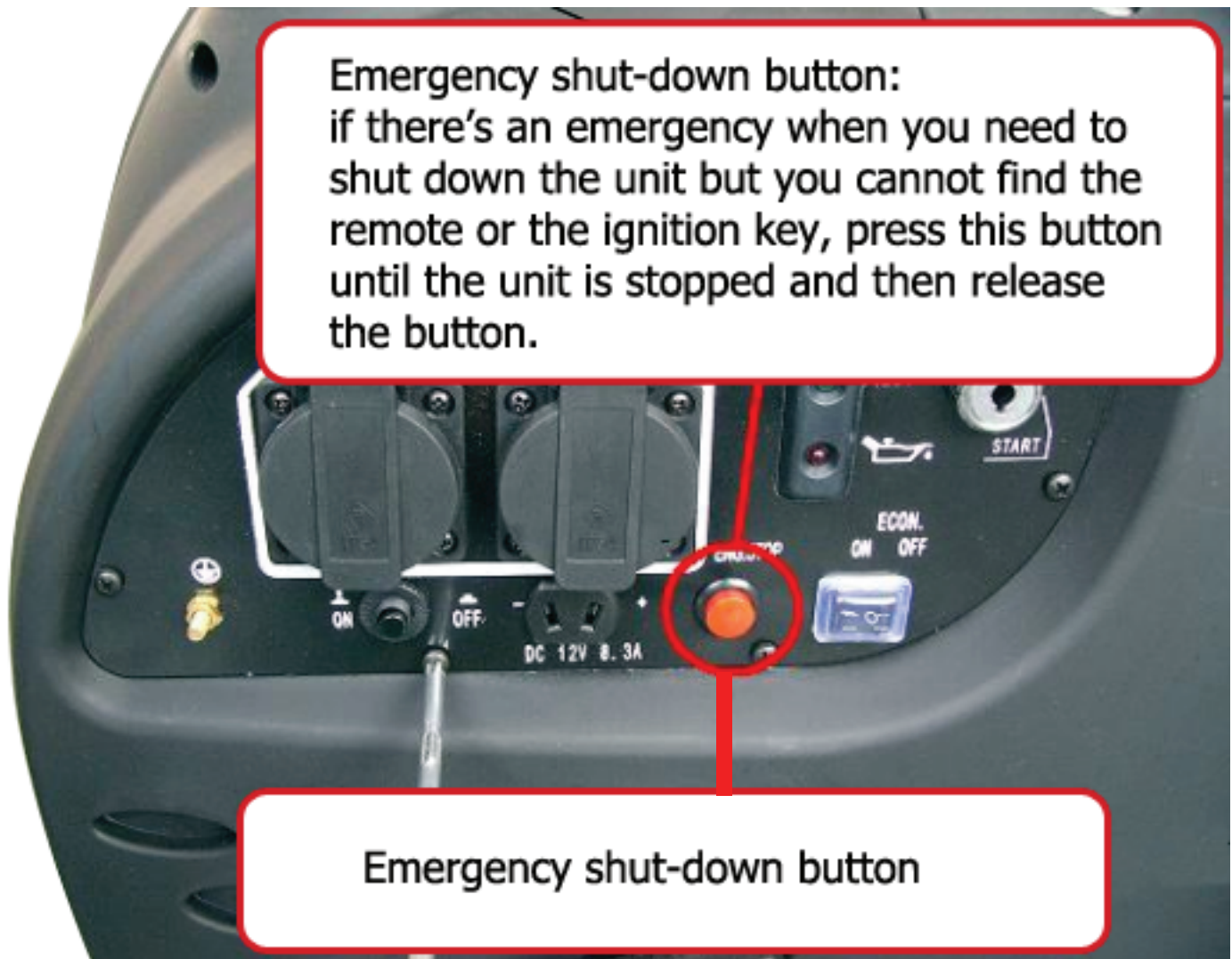
Shut-down button. The button doesn't have the lock function any more. If the unit is shut down with this button, it can also be started with the ignition key.





Note: The unit can be started by either the electric key or remote controller. When the unit is started with electric key, it can be shut down with electric key. Under this situation, the remote cannot shut the unit down. When the unit is started by remote controller, it can be shut down by either remote or electric key. **If you shut Down the unit with i electric key, you must turn the remote control switch on the control panel to "OFF" position first, so as to shut down the unit.** However, you can shut down the unit by the Emergency shut-down button on the control panel no mater the unit is started with either electric key or remote controller.

**Emergency shut-down button:**  
if there's an emergency when you need to shut down the unit but you cannot find the remote or the ignition key, press this button until the unit is stopped and then release the button.



**Emergency shut-down button**